



# Class A Flex Space! Immediate Access to I-696

Developed &  
Managed By



## For Lease or Sale | American Commerce Centre Southfield, Michigan

### Property Highlights

#### 26545 American Drive

- 15,000-51,954 Square Feet Available
- Lease Rate: \$12.50/SF NNN
- Extensive Window Line Surrounding the Building
- 10' Finished Ceilings
- 16' Clear Height & (8) Overhead Doors
- 250 Parking Spaces

#### 26495 American Drive

- 21,736 Square Feet Available
- Lease Rate: \$12.50/SF NNN
- Extensive Window Line Surrounding the Building
- 10' Finished Ceilings
- 16' Clear Height & (2) Overhead Doors
- 119 Parking Spaces

**John Fricke**

+1 248 226 1887

[John.fricke@colliers.com](mailto:John.fricke@colliers.com)

**Jonathan Loos**

+1 248 226 1692

[Jonathan.loos@colliers.com](mailto:Jonathan.loos@colliers.com)

**Peter J. Kopic**

+1 248 226 1842

[Peter.j.kopic@colliers.com](mailto:Peter.j.kopic@colliers.com)

**Peter E. Kopic**

+1 248 226 1840

[Peter.kopic@colliers.com](mailto:Peter.kopic@colliers.com)



## Property Photos

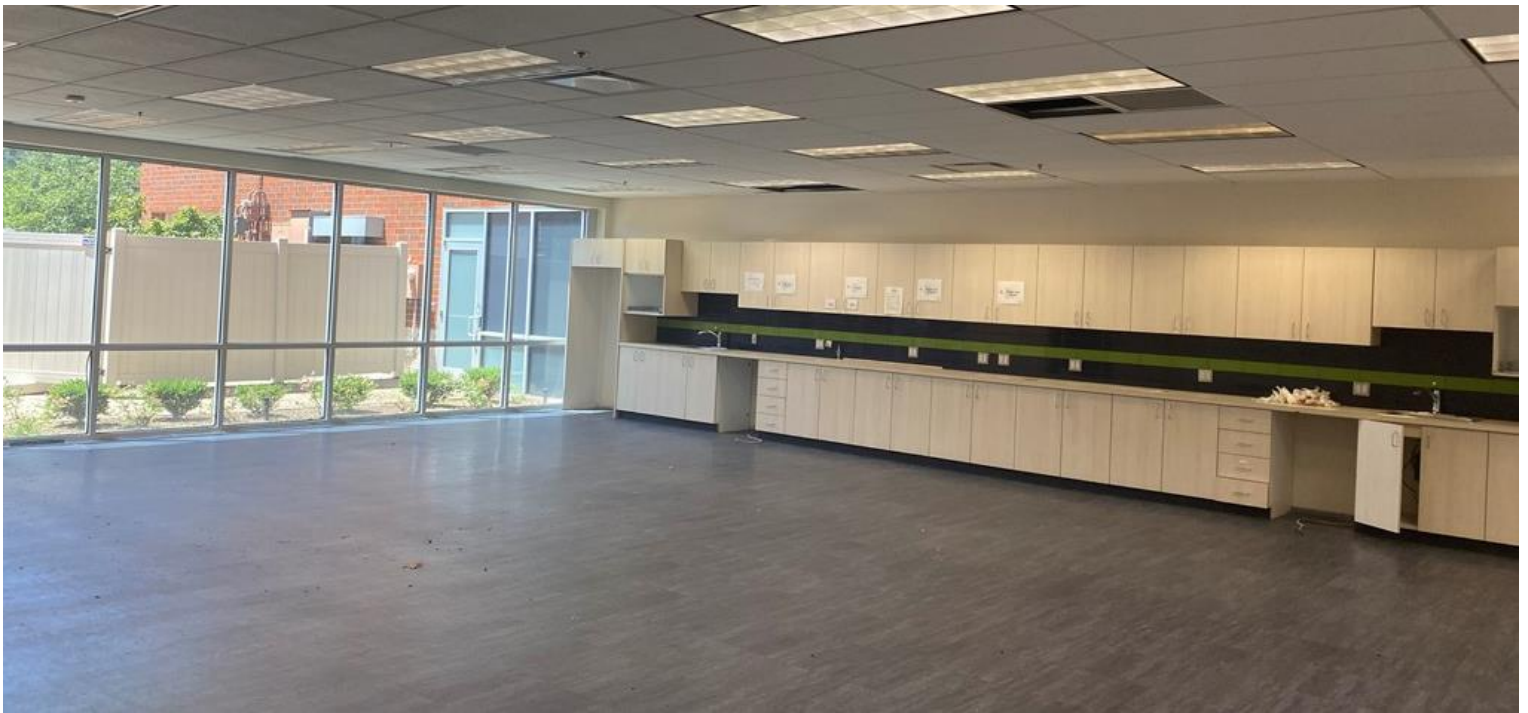
**For Lease or Sale | American Commerce Centre**  
26545 & 26495 American Drive | Southfield, MI





# Property Photos

**For Lease or Sale | American Commerce Centre**  
26545 & 26495 American Drive | Southfield, MI



# Property Photos

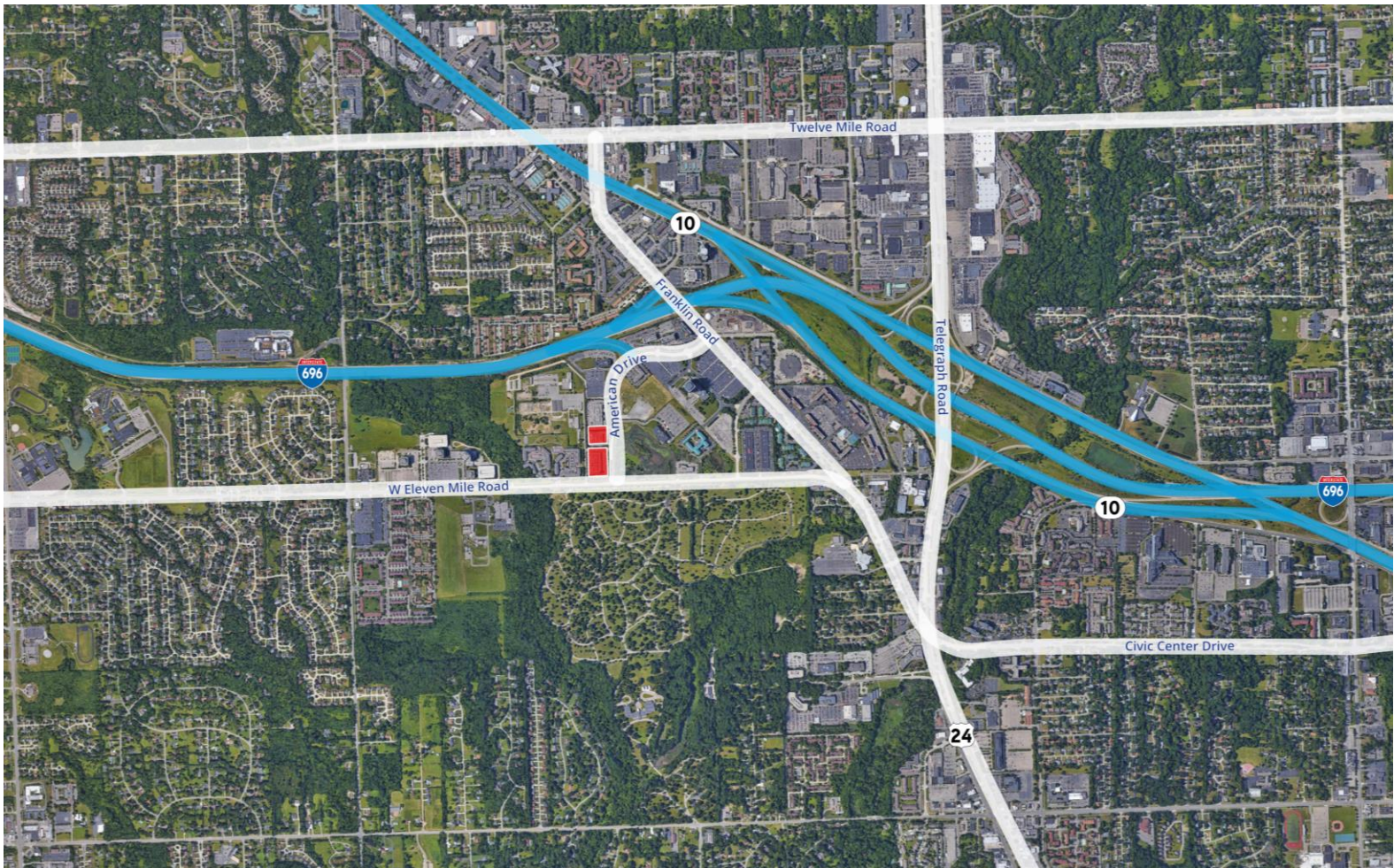
**For Lease or Sale | American Commerce Centre**  
26545 & 26495 American Drive | Southfield, MI





Aerial

For Lease or Sale | American Commerce Centre  
26545 & 26495 American Drive | Southfield, MI

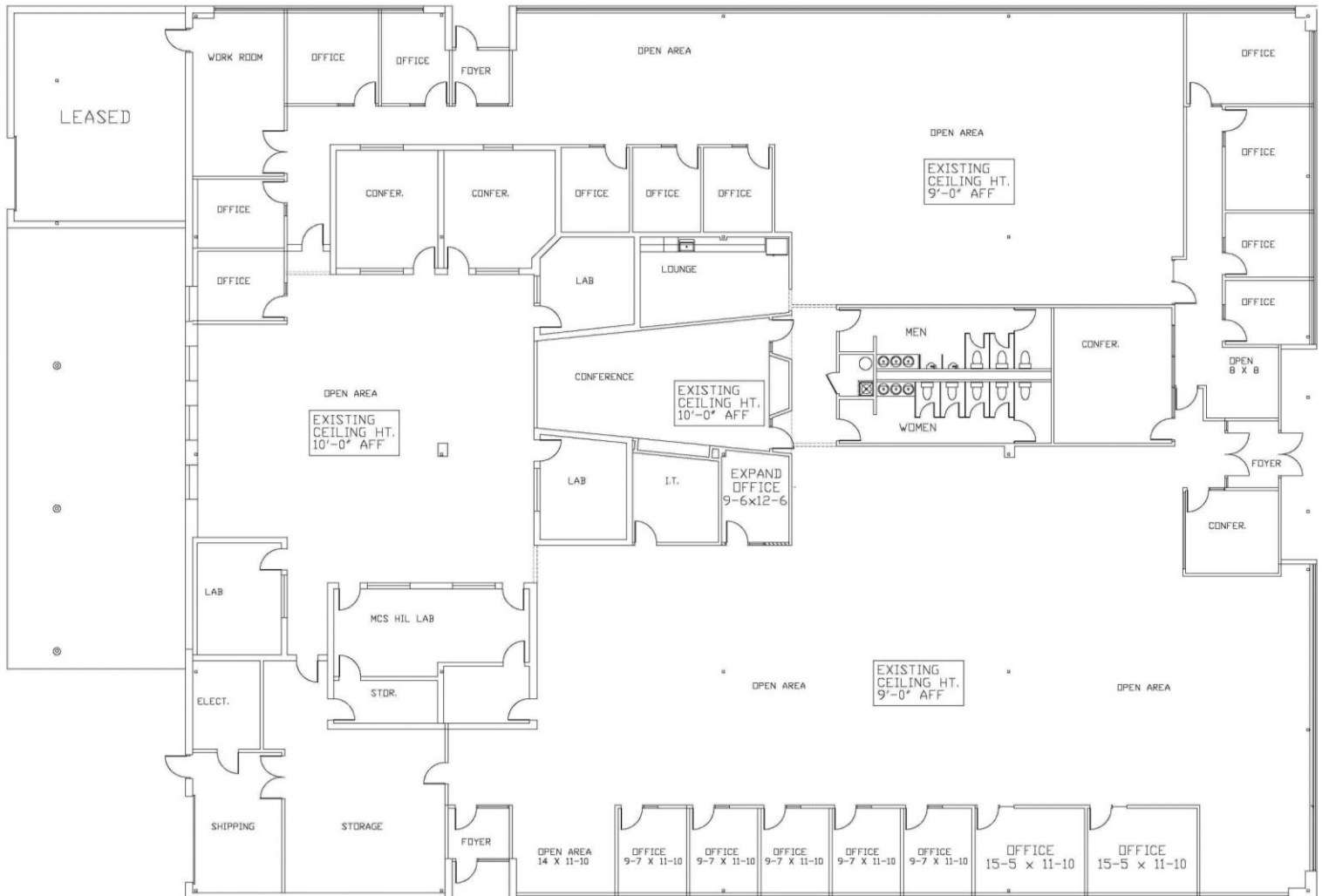


Colliers

# Floor Plan

For Lease or Sale | American Commerce Centre  
26545 & 26495 American Drive | Southfield, MI

26495 American Drive



## FLOOR PLAN

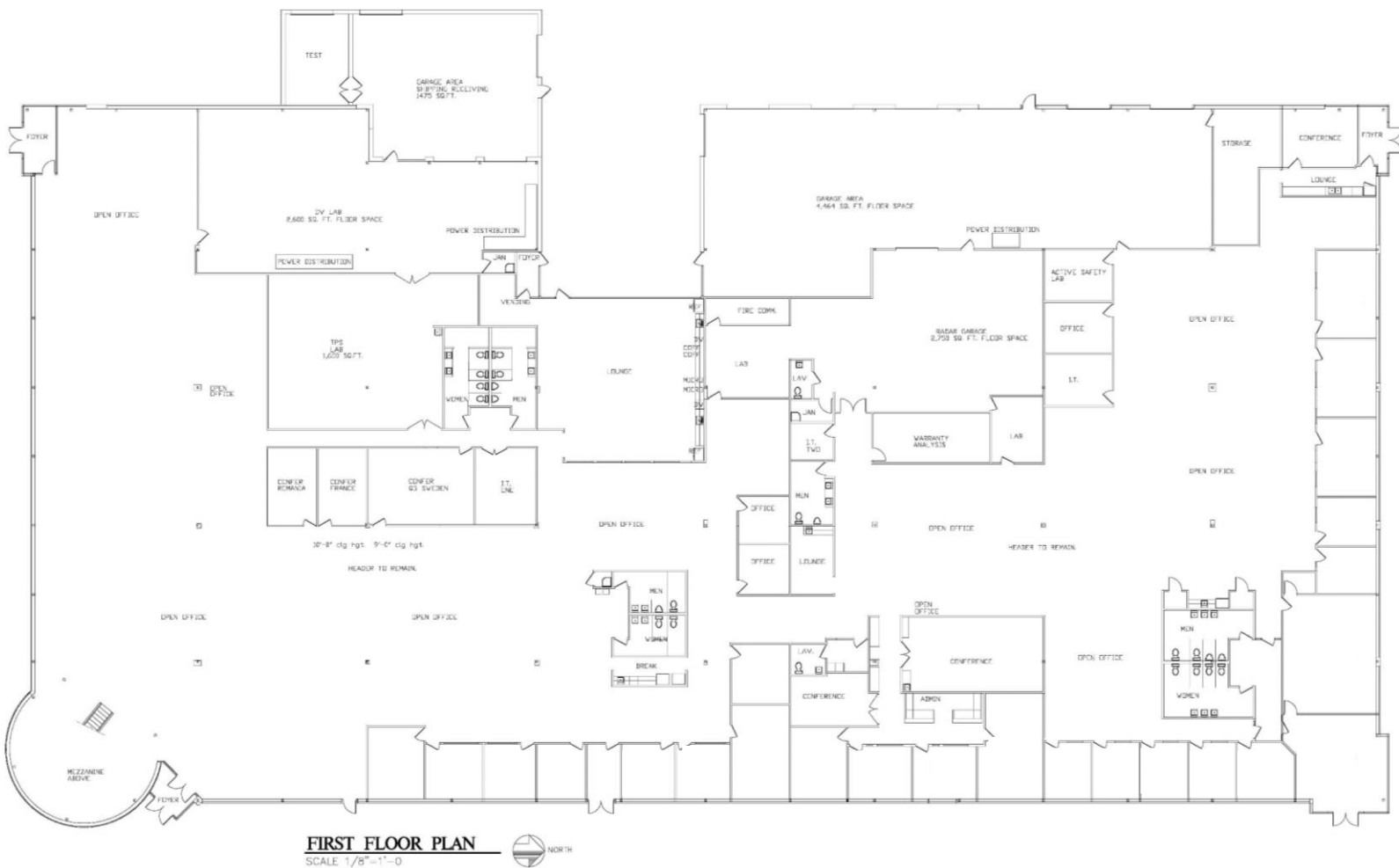
SCALE: 1/8"=1'-0"



# Floor Plan

For Lease or Sale | American Commerce Centre  
26545 & 26495 American Drive | Southfield, MI

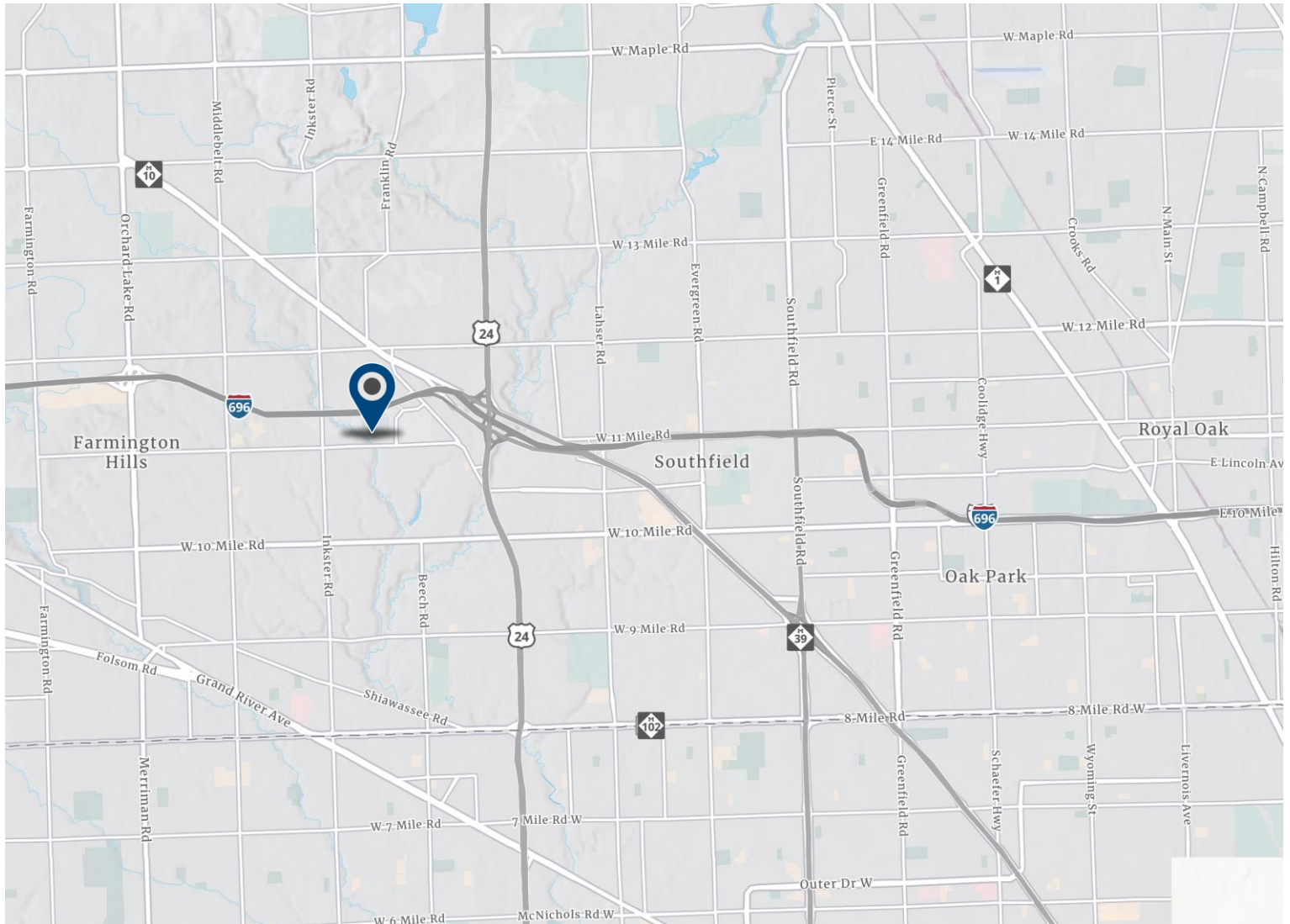
## 26545 American Drive





# Location Map

**For Lease or Sale | American Commerce Centre**  
26545 & 26495 American Drive | Southfield, MI



**John Fricke**

+1 248 226 1887

[John.fricke@colliers.com](mailto:John.fricke@colliers.com)

**Jonathan Loos**

+1 248 226 1692

[Jonathan.loos@colliers.com](mailto:Jonathan.loos@colliers.com)

**Peter J. Kepic**

+1 248 226 1842

[Peter.j.kepic@colliers.com](mailto:Peter.j.kepic@colliers.com)

**Peter E. Kepic**

+1 248 226 1840

[Peter.kepic@colliers.com](mailto:Peter.kepic@colliers.com)

**Colliers**